



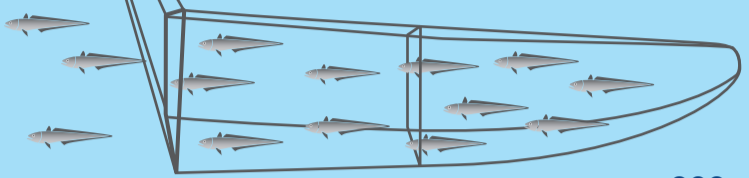
we live for the sea

Protecting The Seabed



Trawl Lanes

Sealord uses both mid-water and bottom trawls to catch fish.



200m

Mid-water fisheries



Hoki
Ling
Squid

600m

Deep-water fisheries



Orange Roughy
Cardinal
Alfonsino
Oreo Dory

1000m

1.2 million km²

National Parks

BPA's are like national parks – and make up 1.2 million km² of New Zealand Waters = 30% of ocean floor



EEZ Boundary
Seamount Closures
Benthic Protection Areas



Scan the code for a more detailed BPA map.

Location of Benthic Protection Areas and Seamount Closures

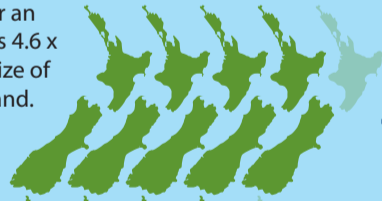
NZ has the world's 5th largest EEZ (exclusive economic zone) which means the ocean we are responsible for covers 2.9 million km².

1%

The amount of seabed touched by all fishing each year is only 1%.

No Small Matter

BPA's cover an area that is 4.6 x the total size of New Zealand.

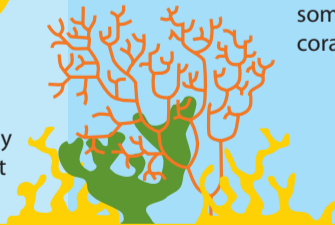


1250m



Closures

3 fisheries were closed to create a series of BPA's – benthic protection areas. The majority of the area closed is pristine ecosystems that have never been bottom trawled.



See our coral

Scan the code to see some of the benthic coral we're protecting



The Total area of NZ seabed that has EVER been bottom trawled = 9%

9%



91%

NZ Seabed

91% of New Zealand waters have never been bottom trawled.



30%

No Go Zone

30% of New Zealand's ocean floor is closed to all bottom trawling by Benthic Protection Areas & Seamount closures. 3 fisheries were closed to create the BPA's.

Seabed Fact: 1.2million km² of New Zealand waters are closed to bottom trawling. In some places, the deep sea floor is more than 4000m down!

for more information visit: www.sealord.com/environment

